

# Post Register



**Animal rhythms**  
Concert at Tautphaus Park Zoo  
takes music to a wilder place: B5

www.postregister.com

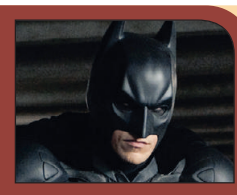
FRIDAY

July 20, 2012

**Helping hands**  
Interfaith project  
helps local welfare  
organizations C1



**Batman's back**  
'The Dark Knight Rises' now in theaters B8



**Globe trotter**  
Rigby man wants to  
circumnavigate the  
globe via bike B1



## CHILD SEXUAL ABUSE

# “It's as if somebody peeled back the curtain to Hell and said, 'Take a peek. Take a peek and see what humans can do to each other.'”

More than 90 percent of sexually abused children are victims of someone they know, according to experts

■ Advocacy specialists hope to prevent child sex abuse through education.

**EDITOR'S NOTE:** The Post Register is withholding the name of the mother in this story in order to protect the identity of her daughter, who was a victim of sexual abuse.

By **JEN AUSTIN**  
jaustin@postregister.com

**N**ine in 10. That's the ratio of child sexual abuse victims whose tormentors are known to them.

Children's advocacy experts no longer promote the "stranger danger" message because children are much less likely to be abused by strangers.

The Centers for Disease Control and Prevention estimated that more than 90 percent of sexually abused children are abused by people they know. That's an uncomfortable reality for parents.

Jane (not her real name) had to face that fact when she discovered that her then-9-year-old daughter was sexually abused in 2009 by her husband.

The girl confided in a friend after months of sexual abuse. The friend was able to convince her to tell her mom.

"I didn't really have a lot to go on. She didn't really tell me much," Jane said. "But I knew she wouldn't lie to me, and the only way I could figure it out — the truth — (was to) call the cops."

Jane said her daughter was "humiliated" and didn't want anyone



Stock photo

to know. She also was afraid no one would believe her, and she didn't want her stepfather to go to jail.

The CDC estimated that one in four girls and one in six boys will be sexually assaulted before they turn 18.

Roger Sherman, executive director for the Boise-based Idaho Children's Trust Fund, said the statistics are overwhelming. The Children's Trust Fund is the Idaho affiliate of Prevent Child Abuse America.

"If one in four girls has been abused, then in every room we're in just about, there's some child there who has or will be (sexually) abused in their childhood," he said.

Such statistics aren't new, and there doesn't appear to be a sudden rise in sexual abuse crimes against children, Sherman said, but people are slightly more willing to talk about

■ State law requires adults to report the sexual abuse of a child

**SEXUAL ABUSE**, Continued on Page A4

### Help is available

Help Inc. — Snake River Children's Advocacy Center offers a safe and non-threatening environment where law enforcement officers can interview a child who may have been sexually abused. The center also offers advocacy and intervention services for families and children, as well as educational classes for parents in Idaho Falls. Class times and dates can be found at [www.helpincidaho.org](http://www.helpincidaho.org).

### Effects of abuse

Children and adolescents who have been sexually abused can develop a range of psychological and behavioral problems. Those problems typically include depression, anxiety, guilt, fear, sexual dysfunction, withdrawal and acting out. Depending on the severity, children who have been sexually abused also can develop fear and anxiety regarding the opposite sex and may display inappropriate sexual behavior.

The strongest indication that a child has been sexually abused is inappropriate sexual knowledge, sexual interest and sexual acting out by that child.

Adults who were sexually abused as children commonly experience depression. Additionally, high levels of anxiety in such adults can result in self-destructive behaviors, such as alcohol or drug abuse, anxiety attacks, situation-specific anxiety disorders and insomnia.

Re-victimization also is a common phenomenon among people abused as children. Research has shown that child sexual abuse victims are more likely to be the victims of rape or involved in physically abusive relationships.

Source: *The American Psychological Association*

## Budget battle is brewing

■ Idaho Falls leaders are considering a revenue increase as they prepare to set the 2013 budget.

By **CLARK CORBIN**  
ccorbin@postregister.com

City officials in Idaho Falls are bracing for a difficult slog as they prepare to wade into murky budget-setting waters next week.

Mayor Jared Fuhriman, City Council members and department heads will convene at 8:30 a.m. Wednesday and Thursday at the City Hall Annex to begin analyzing department proposals and budgetary needs.



Fuhriman

The meetings mark the official beginning to a frantic month of number crunching and cost-cutting. Council members expect to set a preliminary budget Aug. 9. A formal budget hearing and official vote is scheduled Aug. 23.

Fuhriman predicts a long and painful process.

"It's not for the faint of heart," he said. "We've seen where the economy is right now and what home sales are. We have some very big challenges this year to do everything we want and to do what is in the best interest of the citizens."

During each of the previous four years, officials kept the property tax levy — the amount of money collected from taxpayers — flat at \$27.6 million. Depending on the property valuations set next month by the county, Municipal Services Director Craig Lords said the city may be forced to raise taxes or seek other revenues.

"I haven't had this chat with many on the council, but personally, I believe we need to bring in new revenue," Lords said. "How much will that be? I don't know."

Next year, city staffers are eyeing an estimated \$18 million project to upgrade the city's wastewater treatment plant.

This year's budget totals \$178.1 million, so the treatment project would chew up more than 10 percent of the entire budget if dollar amounts aren't changed.

At this preliminary stage, Lords said, city staffers anticipate increases

■ Fuhriman hopes to be able to keep property tax dollars flat again next year

**BUDGET**, Continued on Page A4

## Spouse appeal: Candidates' wives help campaigns

■ Both Michelle Obama and Ann Romney are well-regarded among people in their parties, and the campaigns are taking advantage of it.

By **NANCY BENAC**  
Associated Press

WASHINGTON — It's no coincidence that Michelle Obama and Ann Romney are showing up a lot more as the tight presidential race barrels into the final few months.

The rival campaigns are rolling out their top assets in a big way. The first lady is the public face of a new grass-roots mobilizing effort for Team Obama. And Ann Romney's recent inter-

views have put her on display cutting through the campaign din — including her blunt statement Thursday that her husband has provided everything that "people need to know" and won't be releasing more tax returns.

Although Ann Romney is still largely unknown to a large swath of the public, both women

■ Ann Romney said she took attacks personally back in 2008

**WIVES**, Continued on Page A5



Matt Rourke / Associated Press

**First lady Michelle Obama discusses her Let's Move! initiative to fight childhood obesity Wednesday at the Lenfest Police Athletic Center in Philadelphia.**



Evan Vucci / Associated Press file

**Ann Romney, wife of Republican presidential candidate Mitt Romney, talks to supporters during a campaign stop in Milford, N.H., on June 15.**



Bingham County News...C2	Commodities.....C2	Obituaries.....C2	Stocks.....A4
Bright Spots.....C1	Crime Log.....C2	Opinions.....A7	Ticket.....B5
Classified.....D1	Games.....D12	Religion News.....C3	Weather.....A2
Comics.....D11	Movies.....B8	Sports.....B1	West.....C1

**90** High / **58** Low  
**Today:** Mostly sunny.  
**Forecast:** A2

